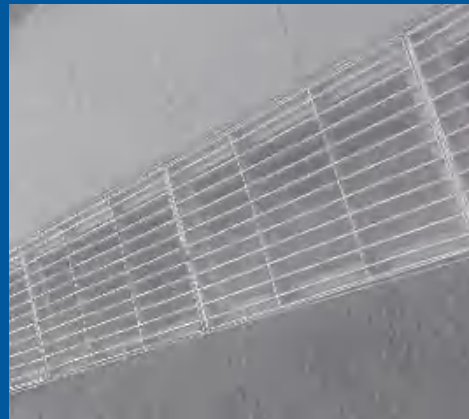
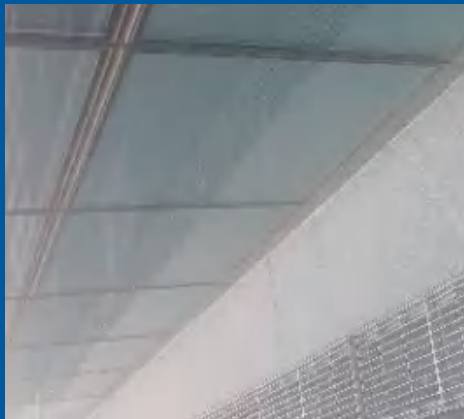


Water grate & Maintenance cover plate



Guangdong Kinlong Hardware Products Co., Ltd.

No.3, Jian Lang Rd., Tangxia Town, Dongguan City, china.

T : 0086-769-82166666 82136666

F : 0086-769-82955240 82955241

E : mail@kinlong.com

H : www.kinlong.com

www.kinlong.com

STOCK CODE: 002791

Improve the human being's living conditions and make Kinlong the synonym for high-quality.

More than **900,000** m² production area.

More than **60** subsidiaries.

More than **1000** sales offices both in domestic and overseas .

More than **15,000** employees.

ESTABLISHING BENCHMARK AND PURSUING EXCELLENCE

Kinlong was established in 2003 and is a company engaged in design and research, manufacturing and sales of construction and building products. We are committed to provide high-quality products and services. After years of development, Kinlong has become a reputable brand in the construction industry.

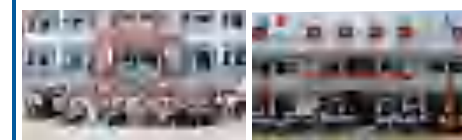
Kinlong industrial park has an area of more than 900,000 square meters and has an employment of more than 15000 staff. Kinlong owns more than 60 subsidiaries, and with over 1000 sales branches in the domestic and overseas markets. The company has more than 20,000 categories of products, which has been sold to more than 100 countries and areas. Kinlong, with it's sophisticated production management, provides customers with integrated solutions for different functional buildings.

Focusing on providing integrated construction and building accessories and diversified products, Kinlong continues to meet customer needs and market changes with the sales model of "R&D + manufacturing + service", and sets up its own marketing networks to directly provide customers with products and technical services. With years of precipitation and accumulation, Kinlong is at the forefront of the industry.

Over the years, Kinlong has been embracing the philosophy of "Unique value is created by professionalism, but no future shall be created by speculation". This has made Kinlong standing on the leading position in construction hardware market. Kinlong has provided products and services for many famous buildings around the world, and the landmark buildings of countless cities have become the pride and glory of Kinlong people.

To every designer, engineer and company committed in construction industry, Kinlong is always the most trustworthy and reliable partner.

Social Responsibility



For more than ten years, Kinlong has not forgotten to give back to the society while developing itself. By the end of 2024, more than 90 kinlong social charity schools have been donated and built in remote and backward areas.



INNOVATION AND ENTERPRISING INDUSTRY BENCHMARK

Kinlong is committed to driving progress through innovation. Our approach has earned us recognition and high praise from state departments, government units, and sectors.



ENTERPRISE REPRESENTATIVE HONOR

Second Prize in National Science and Technology Progress Award

First Prize in Huaxia Construction Science and Technology Award

Second Prize in Huaxia Construction Science and Technology Award

Special Prize in China Steel Structure Association Science and Technology Award

First Prize in China Steel Structure Association Science and Technology Award

Innovation Award in China Steel Structure Association Science and Technology Award

The most influential brand of Jinxuan Award in the construction door, window and curtain wall industry for four consecutive sessions;

2021 TOP500 Preferred Supplier of Comprehensive Strength of Chinese Real Estate Development Enterprises-Smart Community Service Category

National High-Tech Enterprise

.....

REPRESENTATIVE R&D INNOVATION HONOR

National Intellectual Property Demonstration Enterprise

Laboratory center approved by the National Accreditation Board

Guangdong Provincial Enterprise Technology

Center and Provincial Engineering Center

.....

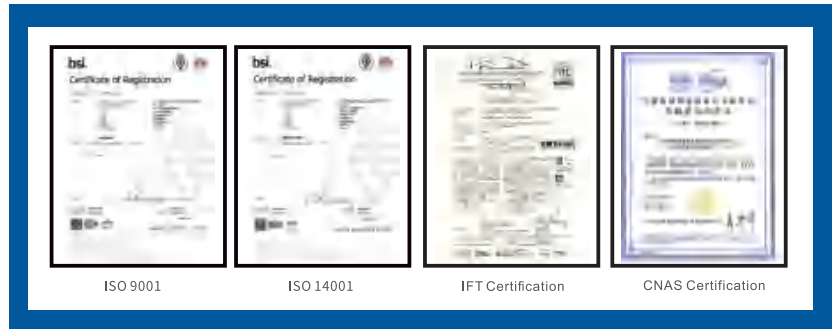
Kinlong adheres to the philosophy that Unique value can only be created by professionalism, speculation has no future. Our enterprise core value is to respect Respecting science; Striving for coexistence and all-win; Promoting constant innovation; Pursuing sincerity and trustworthiness. and we always insist making innovation, breaking through and making progress, increasing our capacity of research, by which we have obtained recognition and praise from government departments, units and all areas in the society and get many achievements. We pay great attention to the needs from our customers and the prospect of our industry, consistently pursuing perfect, good quality, excellent service and systematic solutions. Our quick and accurate ability of handing over are always leading the market.

Kinlong leads the market with good quality, excellent service, systematic solutions and fast and accurate delivery.

To Form a Full-chain Comprehensive Advantage

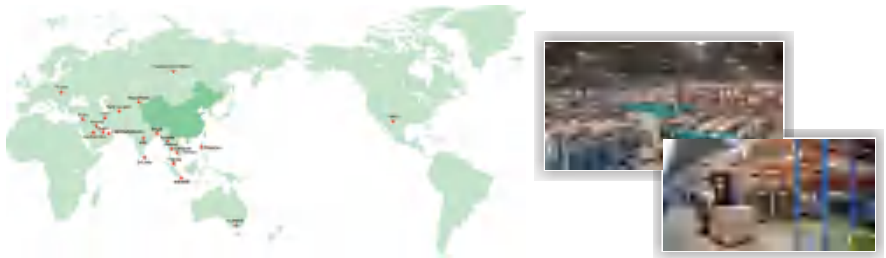


Quality Comes from Profession



Management system certificated by ISO9001,ISO14001 of BSI.Test Laboratory accredited by the China National Accreditation Service of Conformity Assessment(CNAS).

International Supply Chain to Guarantee Better and Better Service



Kinlong owned more than 1000 sales outlets at home and abroad, with a sales team of more than 5,000 staff to provide customers with rapid response. With more than 30 offices, 10 subsidiaries, 15 warehoused overseas market, and more will be set up.

More than **1000** patents, among them **100** of invention patents.

Participate **200** industrial standards compile.

CONTENT

Water grate

Collector cover

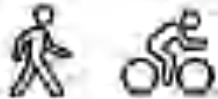



Maintenance cover plate

Instructions

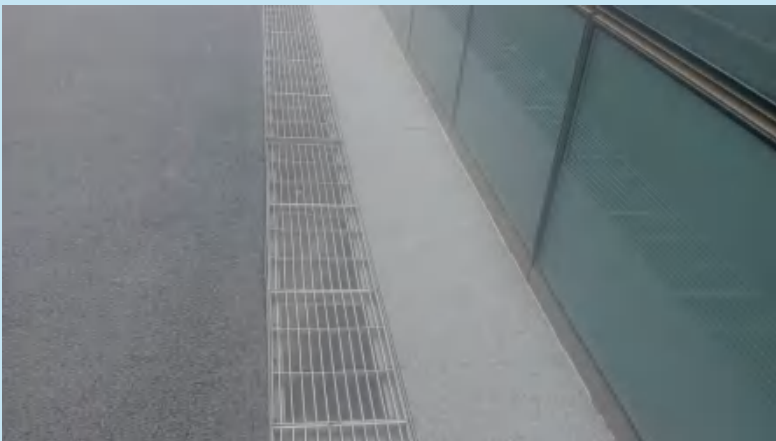
The gutter cover and water collecting well cover are welded using steel plates, offering advantages such as simple construction and installation, lightweight design, good bearing capacity, strong impact resistance, and effective drainage while filtering out garbage and debris. Made from high-quality zinc steel and stainless steel materials, they are durable, rust-resistant, corrosion-resistant, and can withstand high temperatures. These covers have significant advantages over cast iron counterparts and are widely used in chemical plants, pharmaceutical factories, paper mills, sewage treatment plants, food manufacturing plants, municipal roads, garden facilities, residential areas, schools, sports venues, rail transit, airports, and other locations. The products meet the standards of GB/T 23858-2009 "Check Manhole Cover"

- **Product name:** gutter cover, water well cover
- **Material:** stainless steel 304/316, galvanized steel
- **Color:** Stainless steel: Natural; Galvanized Steel: silver white

Bearer Specification

Type	load-bearing /kN	Usage scenario	
A152	≥15	Green Spaces, sidewalks and other areas where motor vehicles are prohibited	
B125	≥125	Non-motorized lanes, car parking and underground parking	
C250	≥250	Residential areas, back streets and alleys, areas where only light vehicles or cars are allowed, within 0.5m from the curb on both sides of the road.	
D400	≥400	Urban main roads, highways, expressways, and other high-grade road areas	
Note: C250 and D400 require consultation			

Water grate



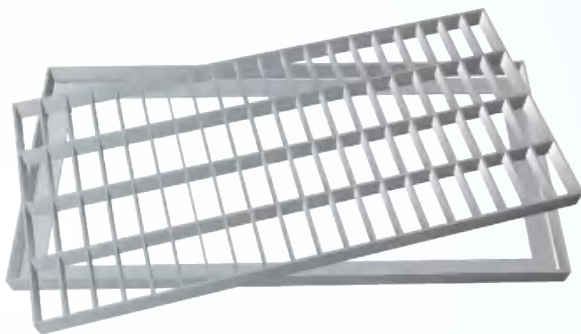
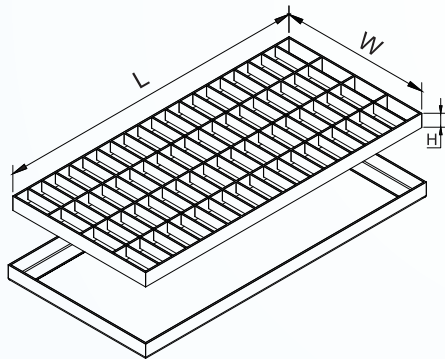
Peculiarity:

- 1、 Selected 304/316 stainless steel, offering strong corrosion resistance and a longer service life.
- 2、 Scientific steel distribution, reasonable design, uniform force, with the option to reinforce the back.
- 3、 Golden ratio, precision welding, and enhanced bearing performance.
- 4、 Exquisite Yin and Yang hole design: The sun well is sealed to prevent water leakage, while the Yin well allows for easy drainage, increasing the practicality of the manhole cover.

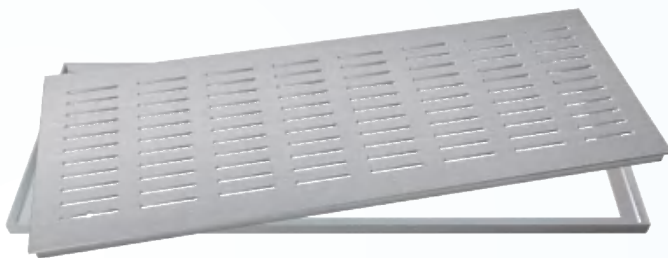
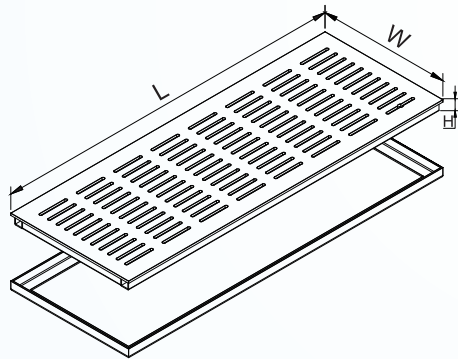
Technical parameter

Water grating general size parameter table			
Plate thickness	3mm	4mm	5mm
Conventional dimensions (L * W)	400×400	400×400	400×400
	500x 500	500x 500	500x 500
	600x 600	600x 600	600x 600
	800x 800	800x 800	800x 800
	200x1000	200x1000	200x1000
	300x1000	300x1000	300x1000
	400x1000	400x1000	400x1000
Height	25/30/40/50		
Note: The above dimensions are for reference only. Please consult online customer service for more details.			

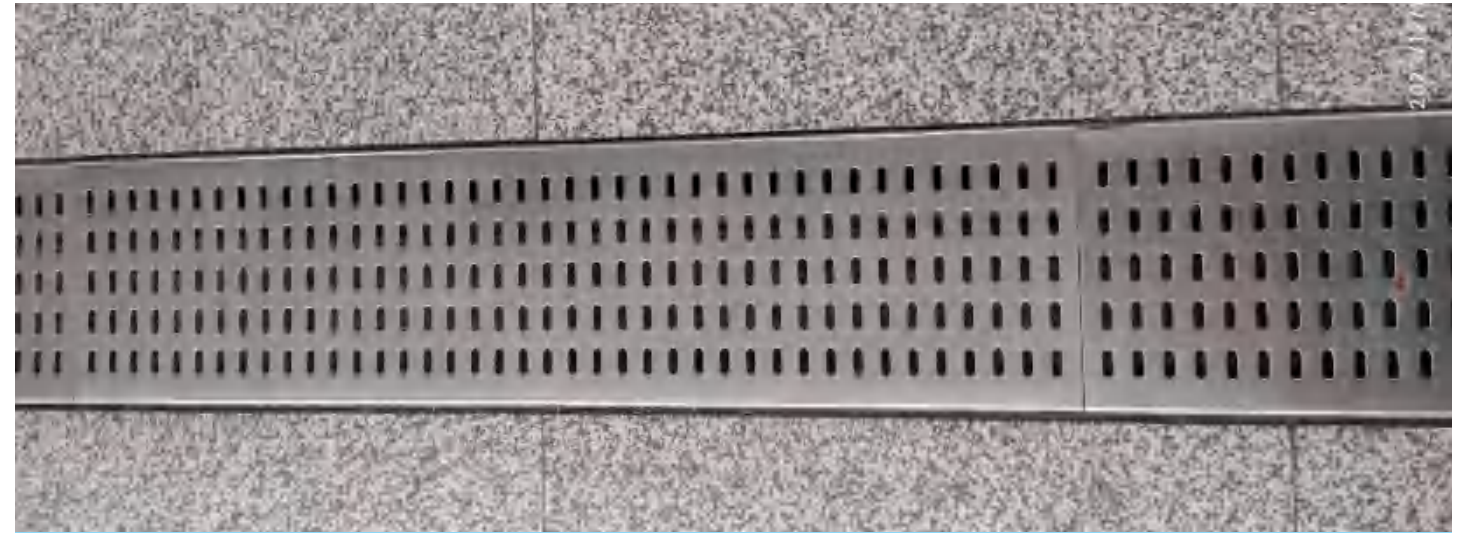
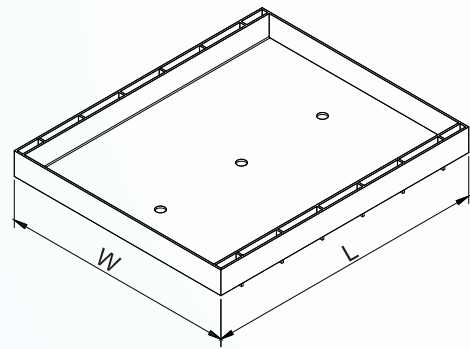
HMCD01 Water grate (Grille)



HMCD02 Water grate (Perforated Plate)



HMCD03 Water grate



GB 55019-2021 《General codes for accessibility of buildings and municipal engineering projects》
The width or diameter of the manhole cover and access hole for the barrier-free passage should not exceed 13mm. Additionally, the strip holes should be positioned perpendicular to the direction of the passage.



Collector cover



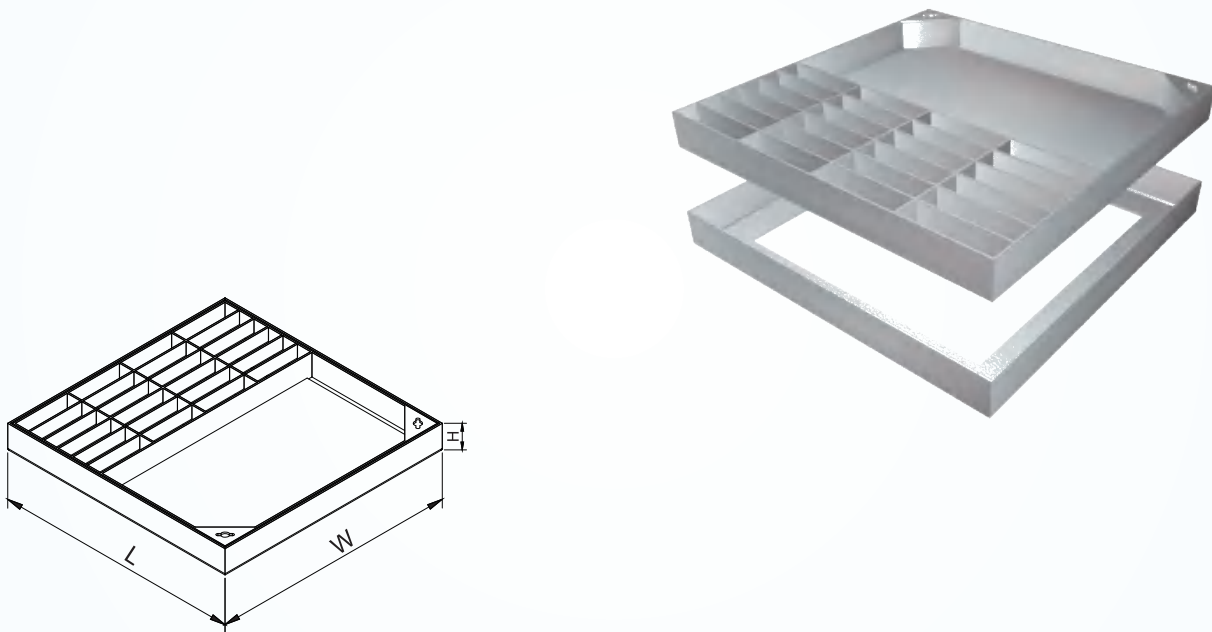
Peculiarity:

- 1、 Selected 304/316 stainless steel, offering strong corrosion resistance and a longer service life.
- 2、 Scientific steel distribution, reasonable design, uniform force, with the option to reinforce the back.
- 3、 Golden ratio, precision welding, and enhanced bearing performance.
- 4、 Exquisite Yin and Yang hole design: The sun well is sealed to prevent water leakage, while the Yin well allows for easy drainage, increasing the practicality of the manhole cover.

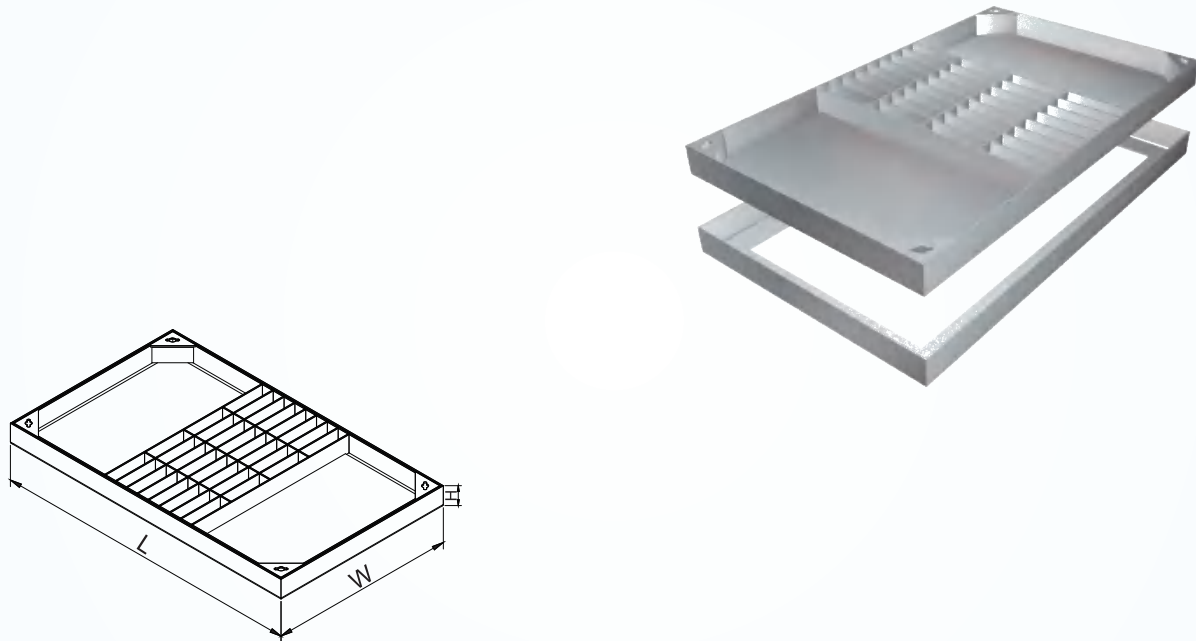
Technical parameter

Plate thickness	3mm	4mm	5mm
Conventional dimensions (L * W)	1000*1000	1000*1000	1000*1000
	800*800	800*800	800*800
	700*700	700*700	700*700
	600*600	600*600	600*600
	500*500	500*500	500*500
Height	50/80/100		
Note: The above dimensions are for reference only. Please consult online customer service for more details.			

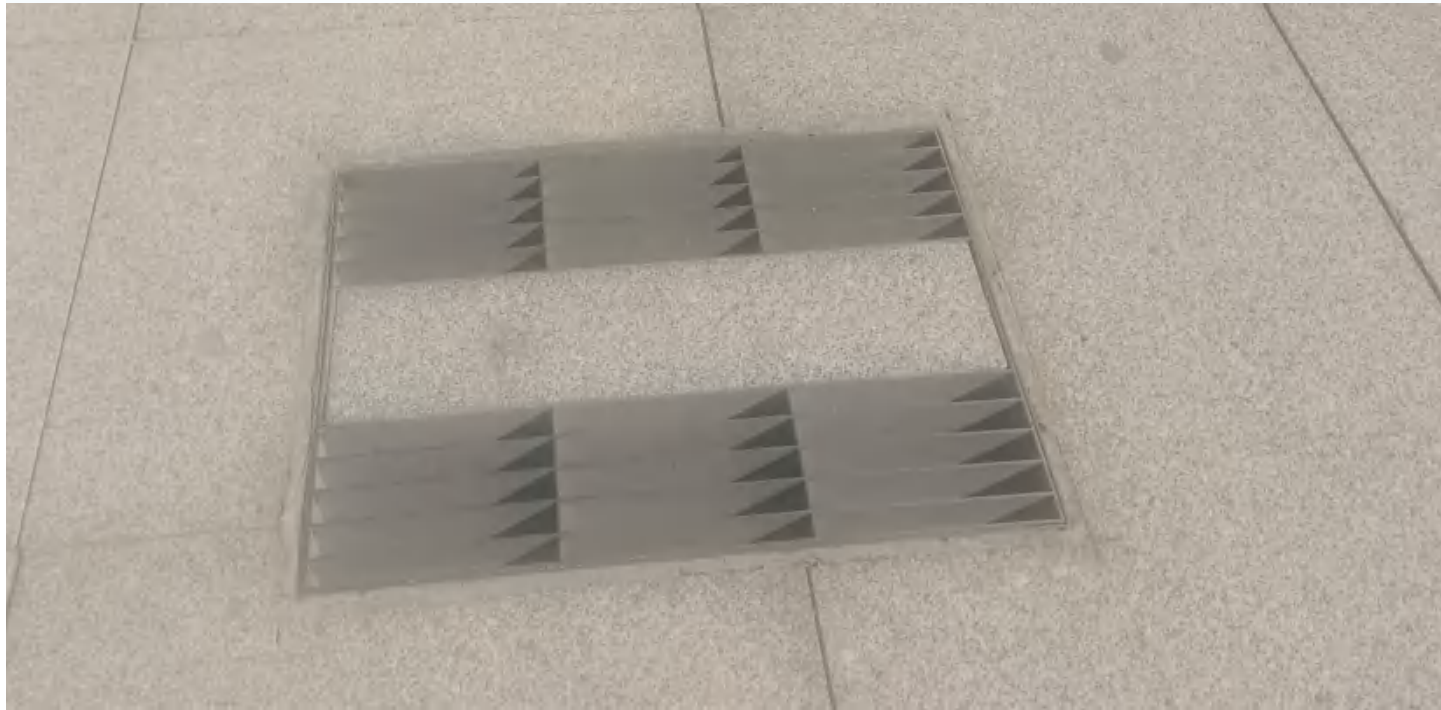
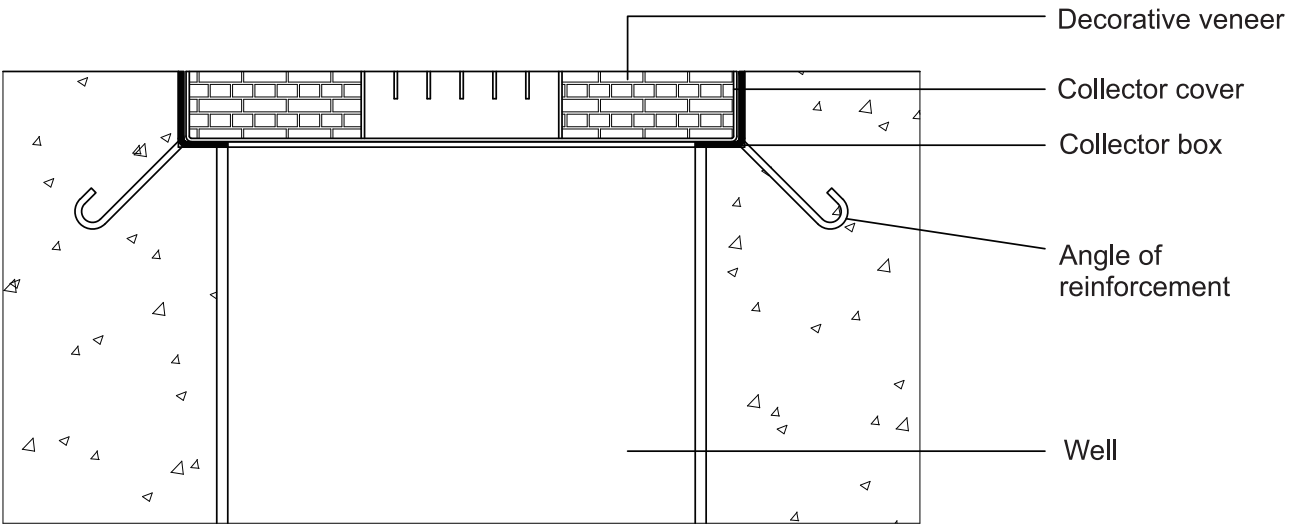
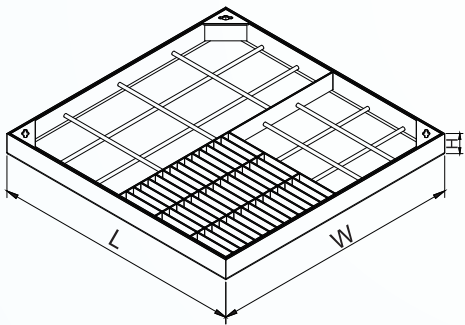
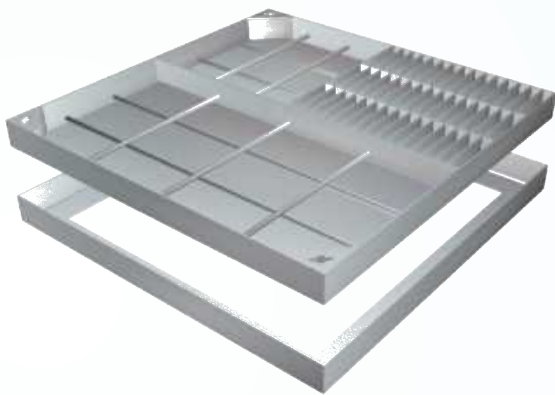
HMCD04 Collector cover



HMCD05 Collector cover



HMCD06 Collector cover



Maintenance cover plate



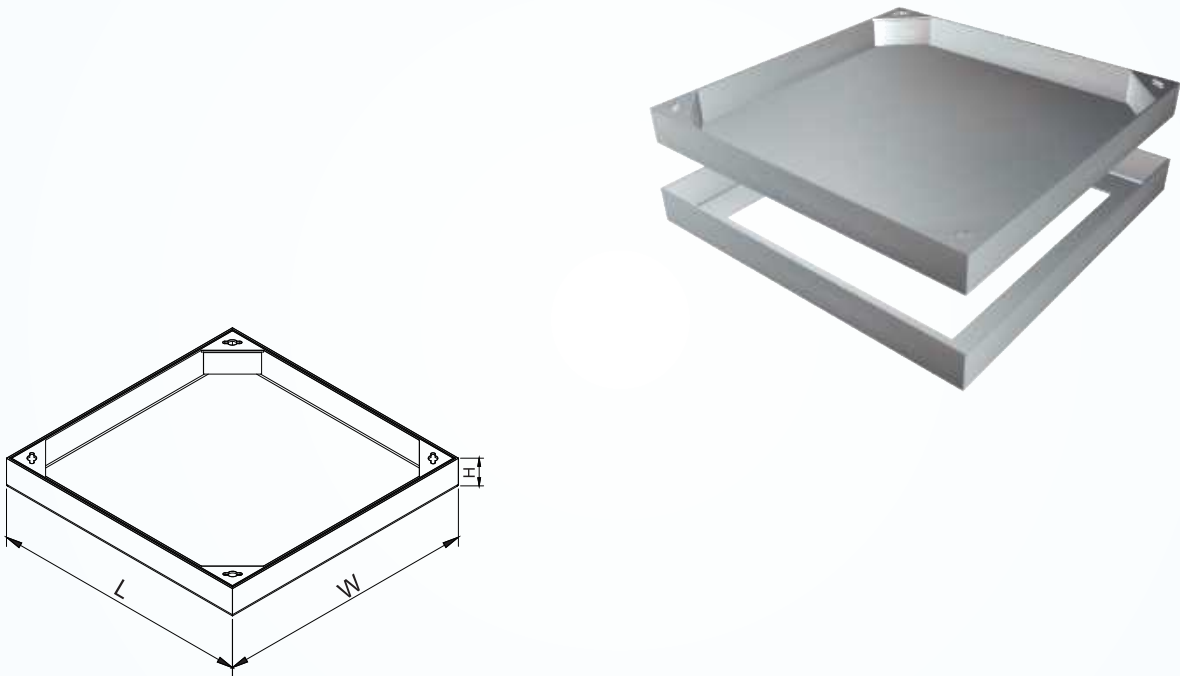
Peculiarity:

- 1、 Selected 304/316 stainless steel, offering strong corrosion resistance and a longer service life.
- 2、 Scientific steel distribution, reasonable design, uniform force, with the option to reinforce the back.
- 3、 Golden ratio, precision welding, and enhanced bearing performance.
- 4、 Exquisite Yin and Yang hole design: The sun well is sealed to prevent water leakage, while the Yin well allows for easy drainage, increasing the practicality of the manhole cover.

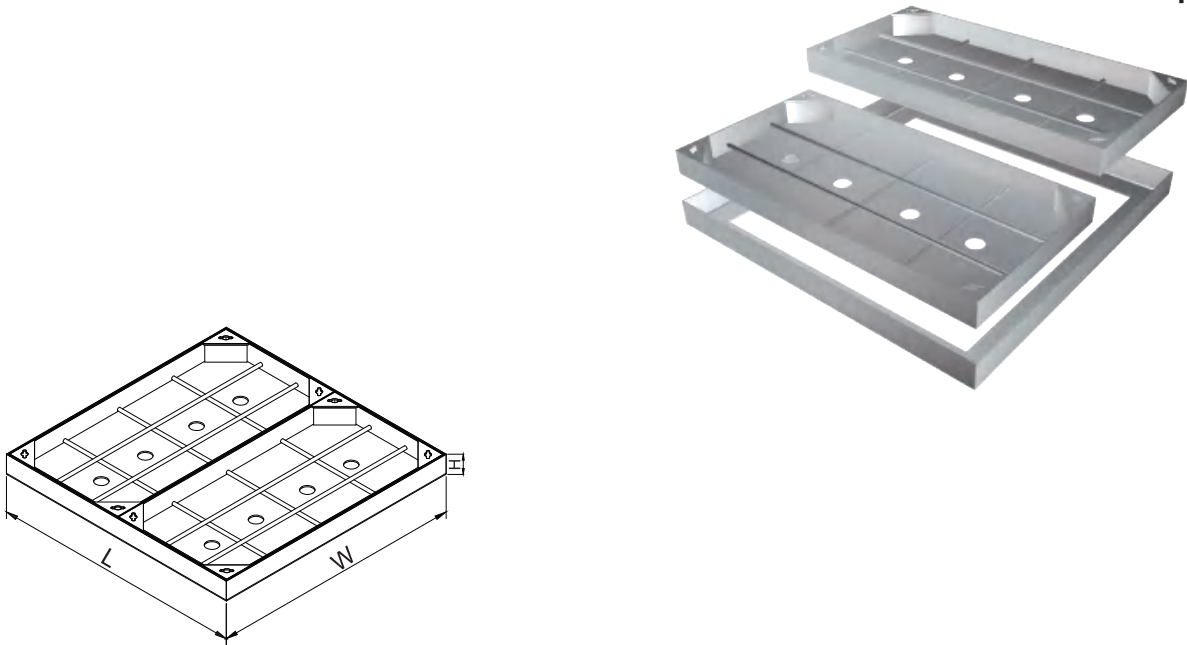
Technical parameter

Plate thickness	3mm	4mm	5mm
Conventional dimensions (L * W)	1000*1000	1000*1000	1000*1000
	800*800	800*800	800*800
	700*700	700*700	700*700
	600*600	600*600	600*600
	500*500	500*500	500*500
Height	50/80/100		
Note: The above dimensions are for reference only. Please consult online customer service for more details.			

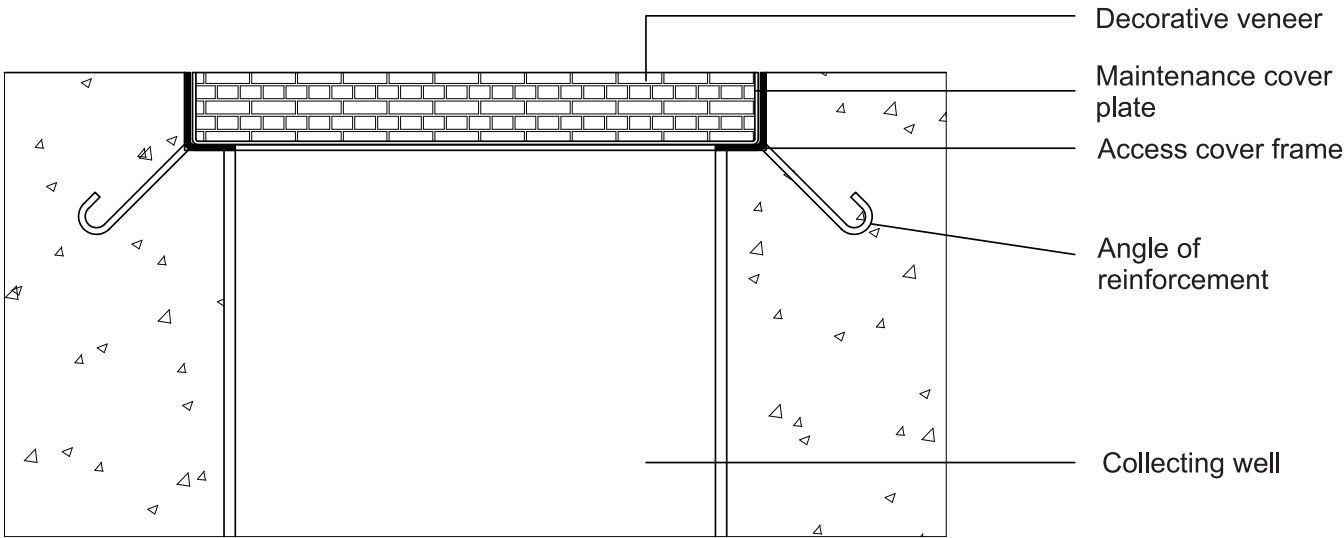
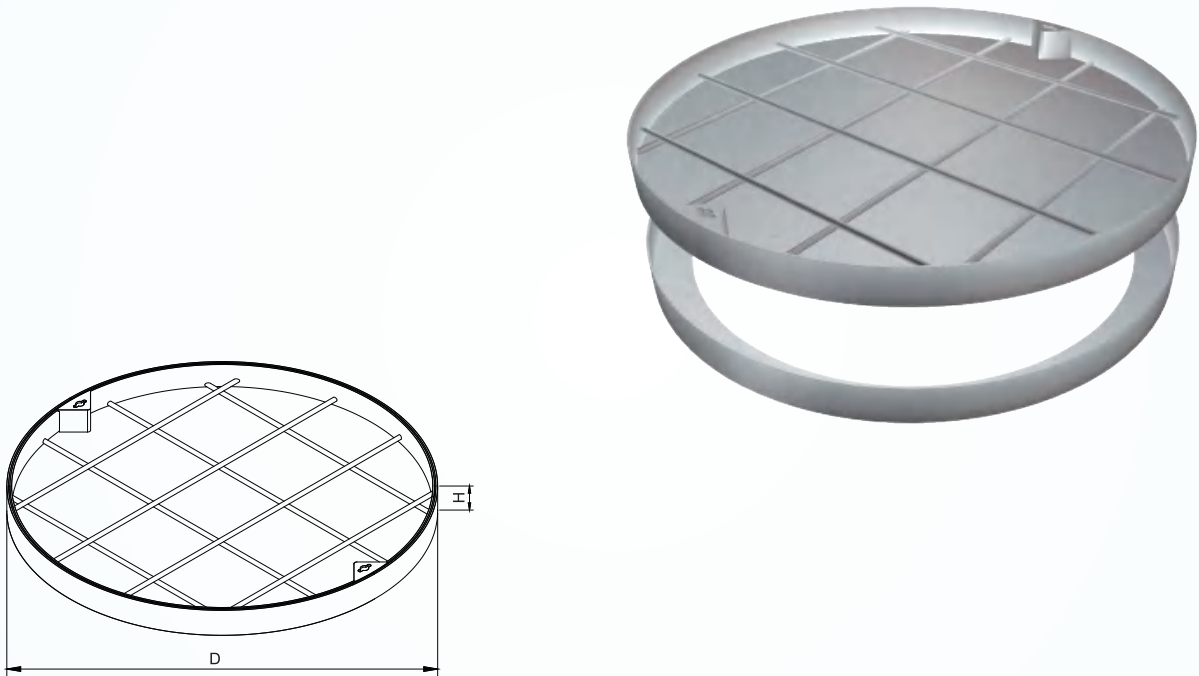
HMC01 Maintenance cover plate



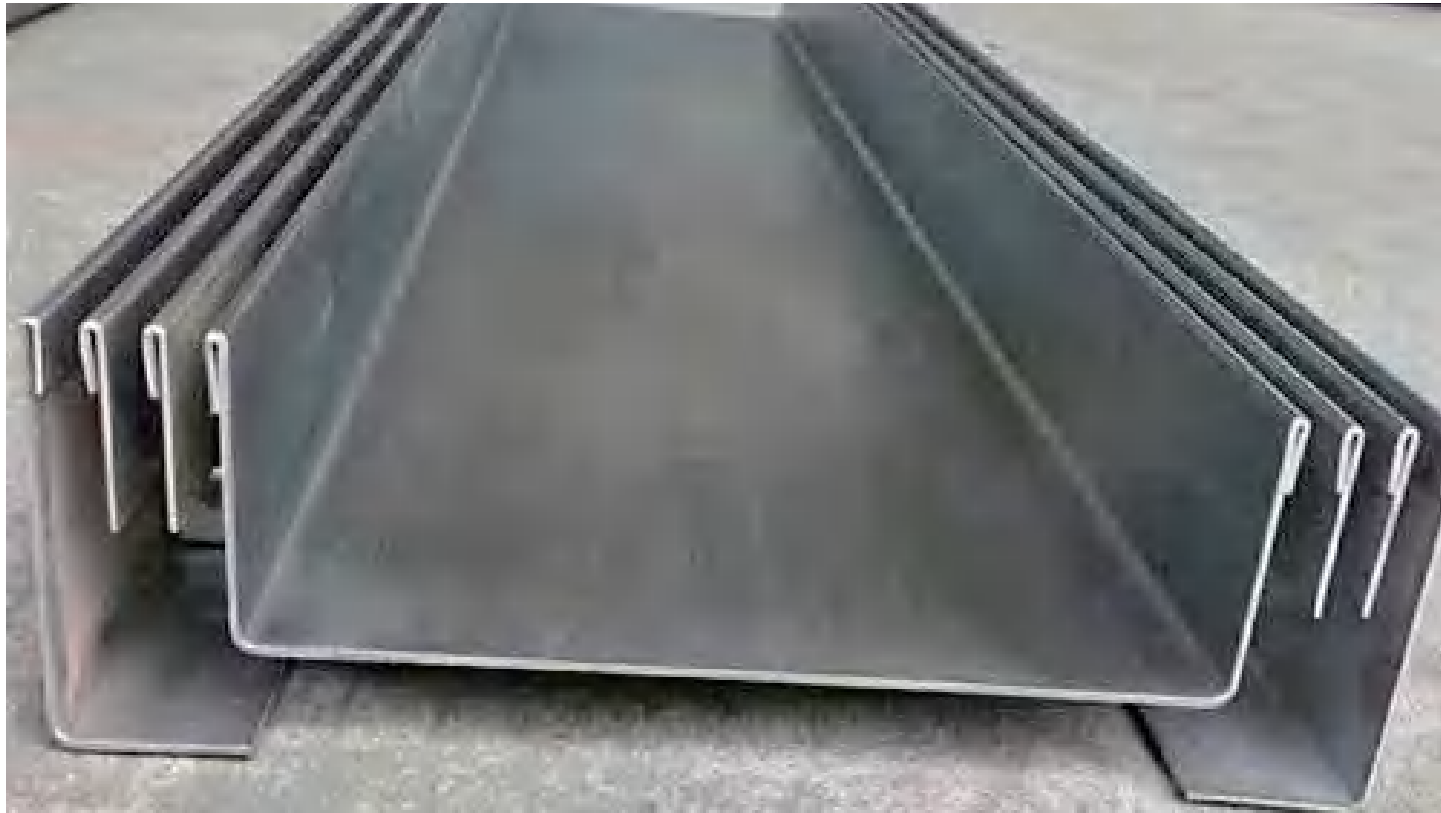
HMC02 Maintenance cover plate



HMC03 Maintenance cover plate



Product display



Product display



Application case



Application case

